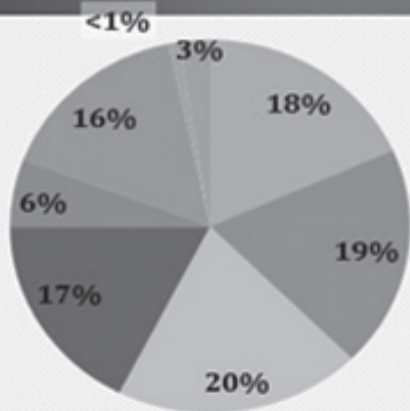


**Figure 4. Workplace Inspiration Factors.**

What in your workplace inspires you?



- Help people directly.
- Make an impact.
- Great staff.
- Make improvements to the organization.
- Be a part of something special.
- Enthusiastic coworkers and passion for local government.
- Diversity of staff: age, gender, ethnicity, cultural background.
- Nothing.